

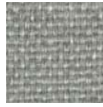
**PREFERRED SEATING: SOME OF OUR STANDARD FABRIC SELECTIONS:**



Shire Oyster  
795



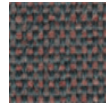
Shire  
Bonemist 694



Sherpa Grey  
Mix522



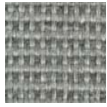
Sherpa Brown  
Haze 541



Shire Cape  
Cod 767



Sherpa Cardinal



Shire Grey  
Mix 622



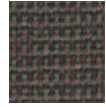
Sherpa  
Terracotta 574



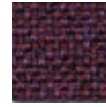
Sherpa Grey  
Heather521



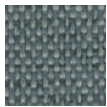
Sherpa  
Burgundy 581



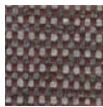
Shire Rain  
Forest 604



Sherpa Grape



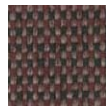
Shire  
Hummingbird  
616



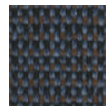
Shire Ascot  
612



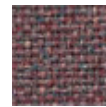
Shire Espresso  
629



Shire Black  
Cherry 676



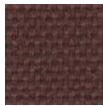
Shire Teal 565



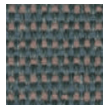
Sherpa Prairie



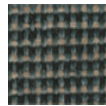
Shire Mystic  
699



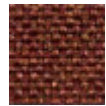
Sherpa  
Maroon 582



Shire Express  
633



Shire Heath  
613



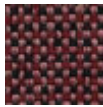
Sherpa  
Autumn



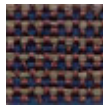
Sherpa Rosewood



Sherpa  
Sugarplum



Shire Black  
Cherry



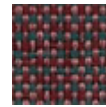
Shire Frontier



Shire  
Nantucket



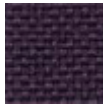
Shire Red  
Rose



Shire Terrace



Shire Very  
Berry



Sherpa  
Concord



Sherpa  
Maroon



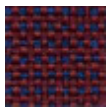
Sherpa Purple  
Velvet



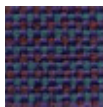
Sherpa Scarlet



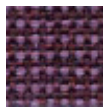
Sherpa Terracotta



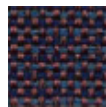
Shire Carmine



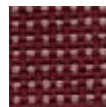
Shire Jewel



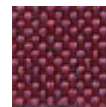
Shire Orchard



Shire Regatta  
Blue



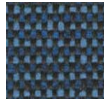
Shire  
Valentine



Strawberry



Sherpa Indigo  
436



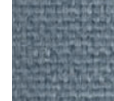
Shire  
Midnight 620



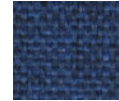
Sherpa Hunter  
562



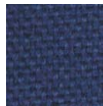
Sherpa Jade  
564



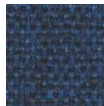
Sherpa  
Brittany 503



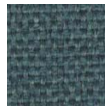
Sherpa Royal 538



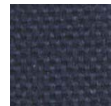
Sherpa Special  
Blue 430



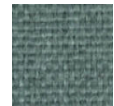
Sherpa Dark  
Blue 536



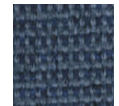
Shire Ivy  
League 709



Sherpa Navy  
537



Sherpa  
Romaine 461



Shire Academy  
Blue 654



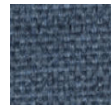
Shire Ink 210



Sherpa  
Neptune 365



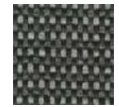
Sherpa  
Billiard 630



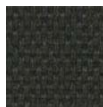
Shire  
Academy Blue  
531



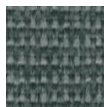
Sherpa Teal  
565



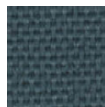
Shire Black  
Marble 623



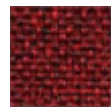
Sherpa Black  
520



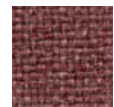
Shire Jade 664



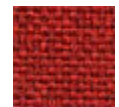
Sherpa  
Empress 563



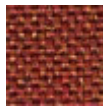
Sherpa Garnet



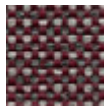
Sherpa Mauve



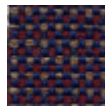
Sherpa Red



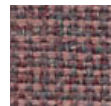
Sherpa  
Sparkler



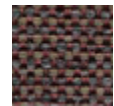
Shire Ascot



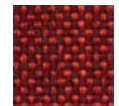
Shire Country



Shire Mesa



Shire Oxford



Shire Strawberry

### Performance: Absecon Sherpa Shire Collection

Abrasion (ASTM-D-4157) 250,000 Double Rubs

Lightfastness (AATCC-16E) 400 Hours, Class 4 Dry-Class 4.5

Colorfastness (AATCC-8) Wet-Class 5 Fill - 54 lbs

Seam Skippage (ASTM-4032) Warp-50 lbs.